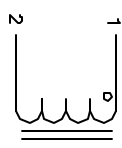


The information contained in this drawing is the sole property of CWS Coil Winding Specialist. Any reproduction in part or whole without written permission of CWS Coil Winding Specialist is prohibited.

REVISION HISTORY			
REV	ECN	DESCRIPTION	DATE
A		PRODUCTION RELEASE	2/9/04



SCHEMATIC

- 1 TO THE CORE
- 2 MUST REST FLAT ON PCB. LEADS MUST BE TANGENT FLUSH WITH THE COIL EDGE. AS SHOWN (I.E. COIL REMOVE INSULATION AND TIN LEADS 0.75 INCH

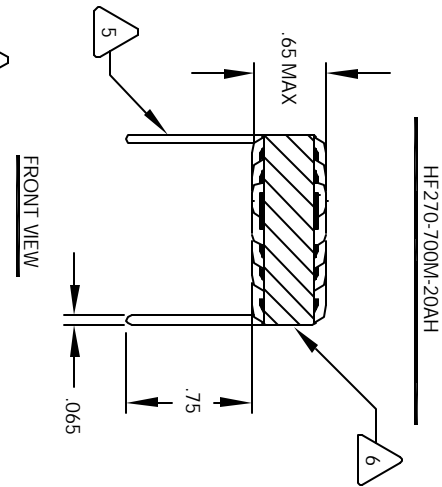
- 3 WIND COILS EVENLY SPACED AROUND THE CORE CONSTRUCTION:

- 4 HI-POT TEST FOR WINDING TO CORE ISOLATION = 500VDC MIN CURRENT RATING : 20 AMPS, 40 °C TEMP. RISE, NO AIR FLOW DCR = 8.0 MILLI-OHMS MAX.

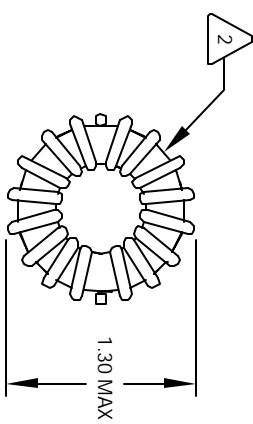
- 5 DC BIASED 20 AMPS, INDUCTANCE = 29 UH
- 6 DC BIASED 10 AMPS, INDUCTANCE = 56 UH
- 7 INDUCTANCE = 70 UH +10% @ LOW DC BIAS, 1 KHz, 250mv
- 8 SPECIFICATIONS:

- 9 WIRE: UL RECOGNIZED 200°C RATED MAGNET WIRE
- 10 CWS BYTE-MARK OR OTHER APPROVED PART
- 11 CORE: COATED HIGH FLUX TOROIDAL CORE

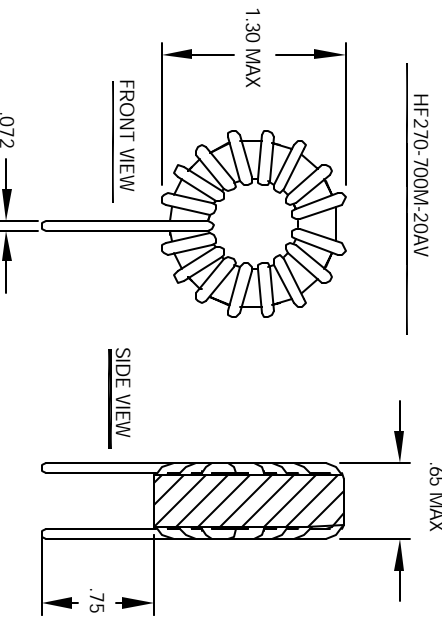
- 12 RATING CLASS B (130°C MIN.) REQUIRED
 - 13 MATERIAL: UL RECOGNIZED 94V-0 FOR FLAMMABILITY
- NOTES: TOROIDAL POWER CHOKES. ALL DIMENSIONS IN INCHES



FRONT VIEW

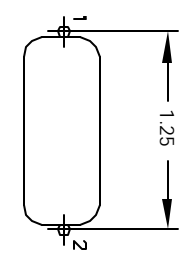


BOTTOM VIEW

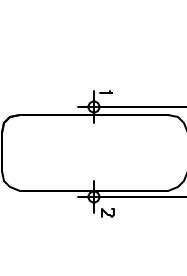


FRONT VIEW

SIDE VIEW



MOUNTING HOLES PATTERN



MOUNTING HOLES PATTERN

CODE IDENT	MFG. P/N	DESCRIPTION	ITEM NO.
		PARTS LIST	
AUTOCAD SOLIDWORKS SIGN	X	CWS Coil Winding Specialist 1510 E. Edinger Ave. Unit B, Santa Ana, CA 92705	
DATE	DATE	TITLE	
2/8/04	2/9/04	Toroidal Power Chokes	
2/9/04	2/9/04	Toroid Inductor	
DATE	DATE	SIZE (DIN. IN.)	REV
3/6/04	3/6/04	HF270-700M-20A	B
APPR. JLAU	3/8/04	SCALE	
		2=1	
DO NOT SCALE DRAWING			